

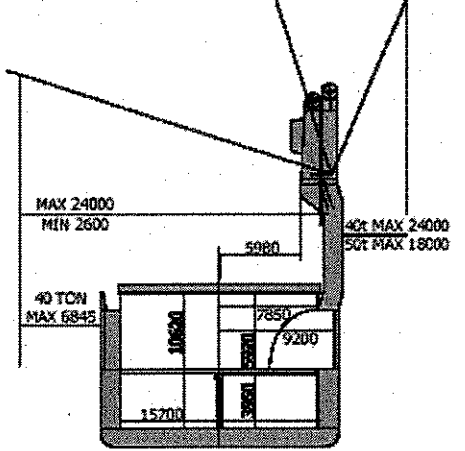
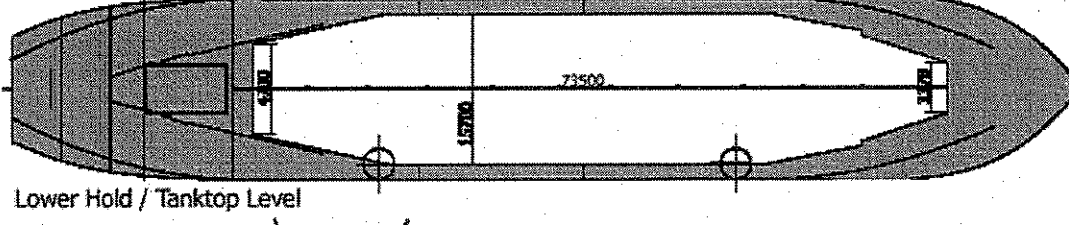
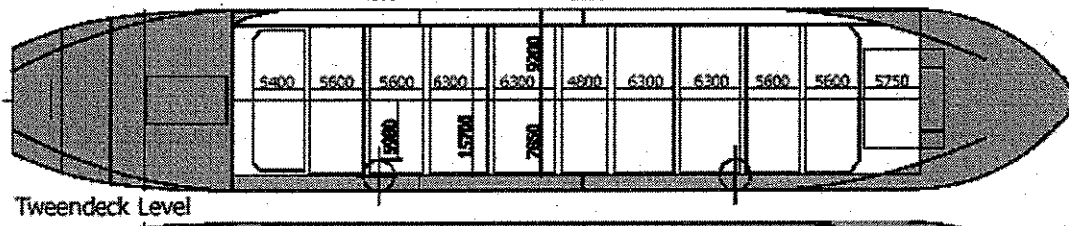
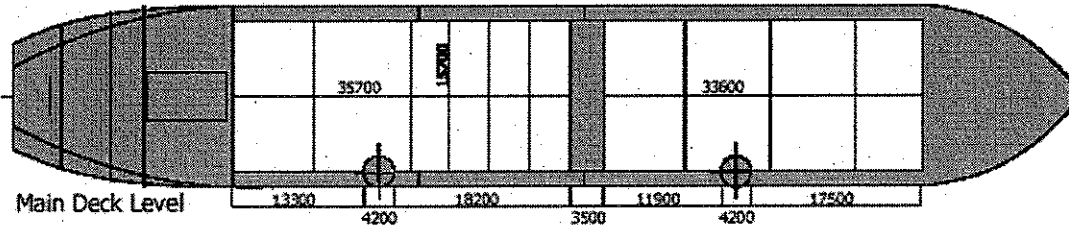
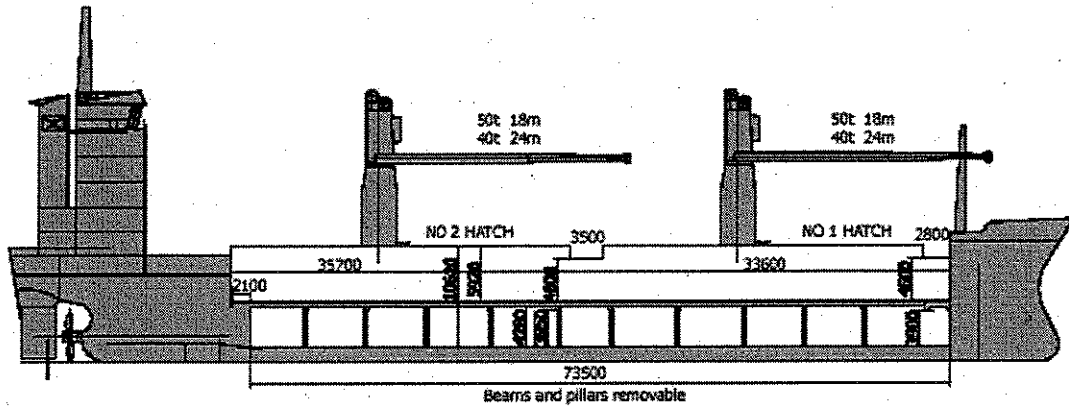
Vessel type to be used for transport:



P2-TYPE

<b>CLASS</b> Ice Class Finnish/Swedish		LLOYD'S * 100 A1 * LMC - UMS 1A Strengthened for heavy cargoes; Great Lakes fitted optional ISM Certified		
<b>PRINCIPAL DIMENSIONS</b>				
Length over all		113,00 m		
Breadth moulded		18,90 m		
Height in hold as SID		10,62 m		
Height in lower hold as TWD		3,95 m		
Height in tween deck as TWD		5,92 m		
Summer draft		8,54 m		
Draft for timber		8,79 m		
GT		5.998		
NT		3.607		
DEADWEIGHT all told		9.653 mt		
Timbermark		10.123 mt		
<b>CAPACITY</b>		Grain	LH 181.000 + UH 283.000 = 444.000 cbft/12.750 m3	
		Bale	LH 181.000 + UH 257.000 = 418.000 cbft/11.840 m3	
<b>FLOOR SPACE</b>		Tank top	1.012 m2	
		Tween deck	1.114/1.312 m2	
		Weather deck	1.060/1.170 m2	
<b>AIR CHANGES (basis empty holds)</b>		Abt 25 x per hour		
<b>CONTAINER INTAKE</b>		TEU	FEU	+ TEU
Hold	Units	234	96	+ 42
Deck	Units	253	115	+ 23
Total	Units	487	211	+ 65
Without pedestals	Minus	18	8	2
Power available for reefer connections		Up to 360/450 kW		
<b>TIMBER INTAKE</b>		Abt 14.000 m3 length packages		
<b>HATCHES</b>		Weather deck	No 1: 33,80 x 15,70 m No 2: 35,70 x 15,70 m Steel, end folding type	
		Tween deck	70,70 x 15,70 m Steel, side folding type, beams and pillars removable	
Bulkheads/compartments		2 sets removable for up to 6 compartments		
<b>MAXIMUM LOAD</b>				
Weather deck hatch covers		1,75 t/m2		
Tween deck hatch covers		3,70 t/m2		
Tank top		20,00 t/m2		
<b>DECK CRANES</b> restricted combinable				
Situated on starboard side, tons/reach		2 of 50 mt SWL/18 m or 40 mt SWL/24 m		

<b>MAIN ENGINE</b>		Hanshin 6.000 HP/4.410 kW
Speed	Ballast	Abt 15 knots
	Laden	Abt 14 knots
Fuel consumption per day		Abt 16,5 mt IFO 380 Cst
		No MDO at sea, except when manoeuvring
<b>BUNKER CAPACITY</b>		
Intermediate Fuel Oil		584 m3
Marine Diesel Oil		120 m3
<b>BALLAST CAPACITY</b>		2.200 m3



**P2**  
 Parkgracht (1988)  
 Pietersgracht (1986)  
 Poolgracht (1986)

*These particulars are believed to be correct, but without guarantee, and they must not be used as basis for Charter Parties or contracts without Owners' explicit written authority.*